



PRO-E Excellent Collet Chuck



Multiply the values of performance!



Used with ER Collet (ISO15488)

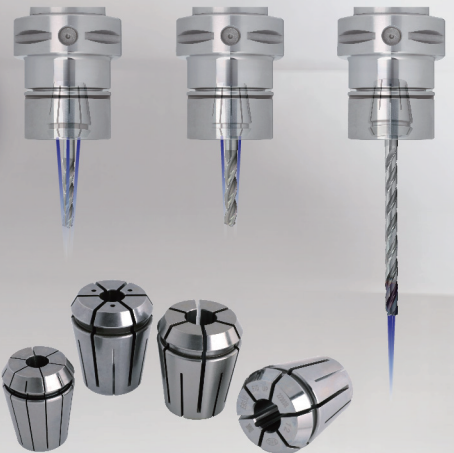
SYIC produces a range of designs of ER collets. The collet types recommended using with PRO-E Excellent Collet Chucks are shown below. It can effectively conquer your machining challenges!

ER-E High Precision Collet	ERS Collet		
	Metallic Sealed	FOD	FID
	Coolant Pressure: ∞		
G 8 μ m	G 8 μ m		
UP 5 μ m	P 3 μ m		

Premium Precision Guarantee

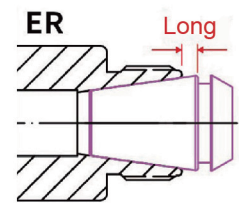
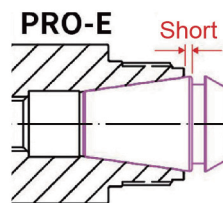
Taper tolerance	< AT3
Roundness	< 0.008mm
Accuracy of toolholder ID hole	< 0.003mm

Clamping range: h7



Revolutionary Upgrade Beyond ER Tool Holders

The design of enlarged holder ID hole optimizes the coverage of ER collet, shortens the tool overhanging length and improves runout accuracy and machining stability.



Two Designs of PRO-E Clamping Nut

Wind Resistance Type	UM Type

Outstanding Product Design Creates Maximum Machining Efficiency

The PRO-E collet chunk and the clamping nut achieve great contact when fastened together due to **the design of upper and lower straight sections**, maximizing the strength, rigidity, and precision stability.

